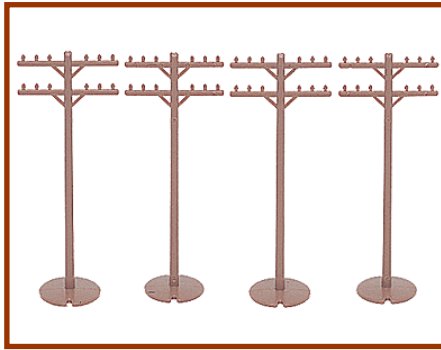


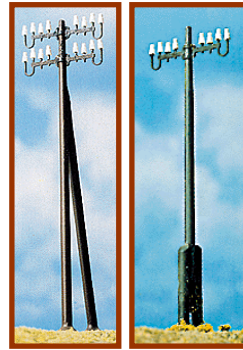
Commercially Available Telegraph and Power Poles: How They Stack Up



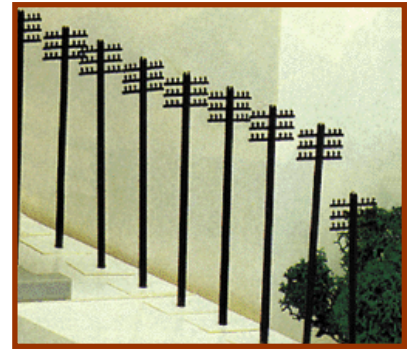
Atlas



Bachmann



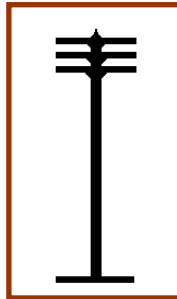
Brawa Modellspeilwaren



Heljan Plastic



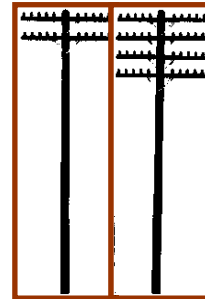
Life-Like



Model Power



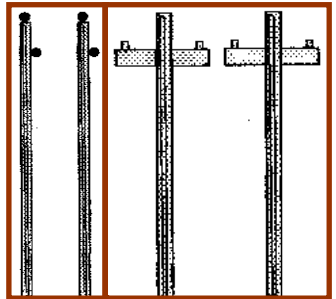
Plastruct



Rix Products



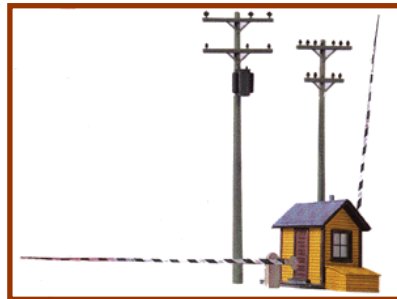
Scale Structures



Stewart Products



Vollmer Gmbh



Walthers Cornerstone



Manufacturer		Meets NMRA RP	Walthers Number
Atlas		Yes w/modification	Walthers Part # 150-775
Bachmann		No- 6 Insulator arm	Walthers Part # 160-42102
Brawa Modellspeilwaren	Telephone Poles w/Supports,	European Modern	Walthers Part # 186-2669
Brawa Modellspeilwaren	Telephone Polesw/Base Supports	European Modern	Walthers Part # 186-2670
Heljan Plastic A/S	Telephone Poles pkg(10)	No- 6 Insulator arm	Walthers Part # 322-512
Life-Like Products	Utility Poles pkg(12)	Yes w/modification	Walthers Part # 433-1621
Model Power	Telephone Poles	No- insulators missing	Walthers Part # 490-1452
Plastruct Inc	Wood Telephone Poles	Yes w/modification	Walthers Part # 570-94852
Rix Products	Railroad Telephone Poles (Brown Plastic)2-Arm pkg(18)	Yes- Telegraph/phone	Walthers Part # 628-32
Rix Products	Railroad Telephone Poles (Brown Plastic)4-Arm pkg(12)	Yes- Telegraph/phone	Walthers Part # 628-34
Scale Structures	Telegraph Poles	Yes- Power Poles	Walthers Part # 650-2540
Stewart Products	Rural Utility Poles 4-1/2"	Yes- Power Poles	Walthers Part # 683-126
Stewart Products	Rural Utility Poles 4-1/2" w/Brackets	Yes- Power Poles	Walthers Part # 683-127
Vollmer Gmbh	Telephone Poles Single	No- 6 Insulator arm	Walthers Part # 770-6010
Walthers Cornerstone	Cornerstone Series(R) Built-ups - Single Building w/Accessories Crossing Shanty w/2 Positionable Gates & 6 Utility Poles (Cream, green trim	Yes - Power Poles No- 4/6 Insulator arm	Walthers Part # 933-2805
Walthers Cornerstone	Cornerstone Series(R) Built-ups - Single Building w/Accessories Crossing Shanty w/2 Positionable Gates & 6 Utility Poles (Two- tone Gray)	No- 4/6 Insulator arm	Walthers Part # 933-2812